



حديد البحر الاحمر
RED SEA STEEL

PRODUCT CATALOGUE



Red Sea Steel Product:

Steel Bars Grade 60: 10mm - 36mm dia.

Steel Bars Grade 80: 16mm - 36mm dia.

Length: 6m – 12 m

Product Standards: SASO ASTM A615-21



ISO 9001: 2015



Gulf Plaza Building, Office 413, P.O. Box 54118, Jeddah 21514, Saudi Arabia
Tel: +966 2665 3433

Our Products

Reinforcing Bars (Plain and Deformed)

Steel Bars Grade 60: 10mm – 36mm

Steel Bars Grade 80: 16mm - 36mm

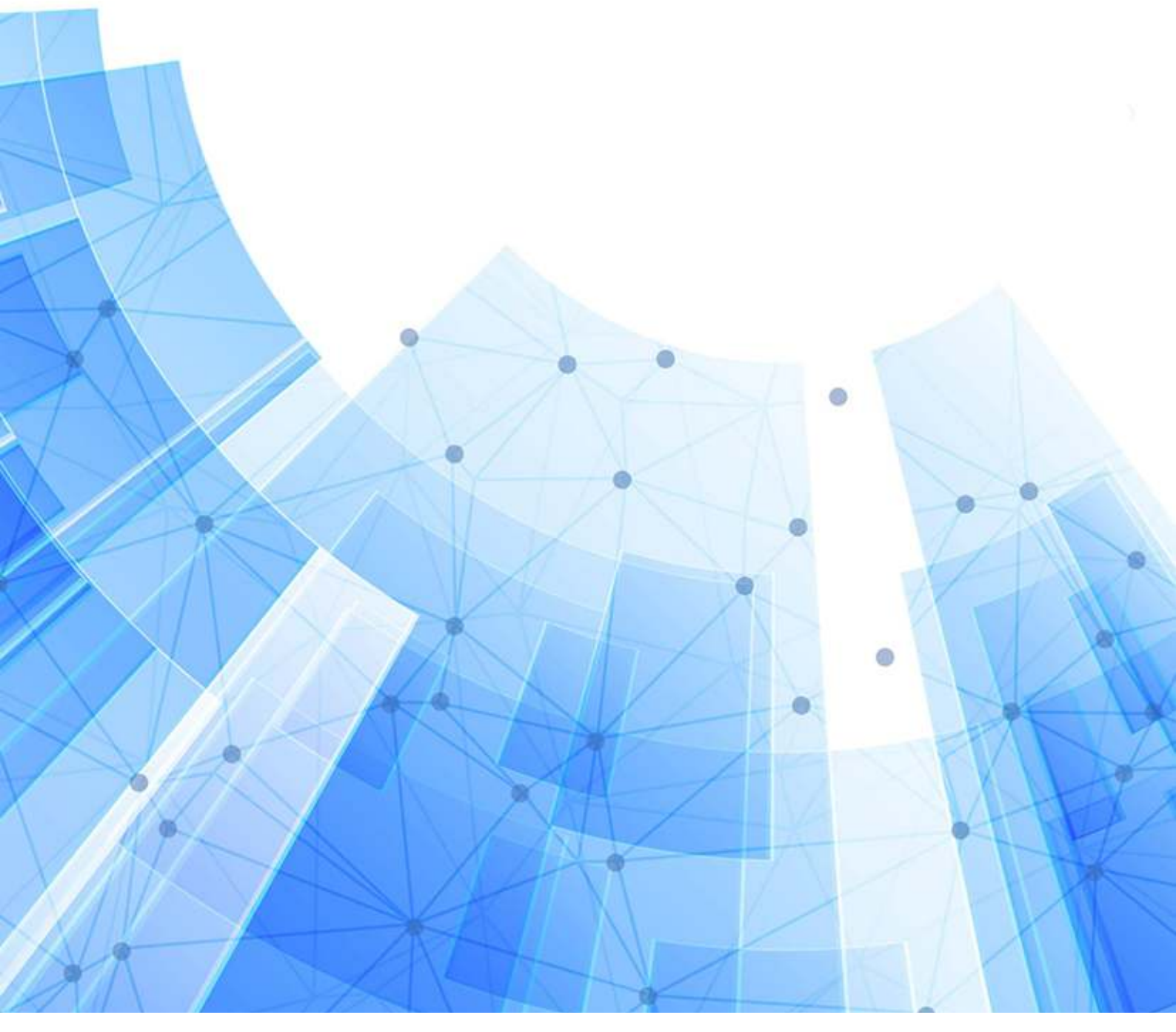
Length: 6m – 12 m

Product Standards: SASO ASTM A615-21





REINFORCING BARS SPECIFICATIONS



RED SEA STEEL COMPANY LTD.
P. O. Box 54118, Jeddah 21514
Saudi Arabia
Tel. : +966 12 665 4219
Fax: +966 12 667 2816



حديد البحر الاحمر
RED SEA STEEL

شركة مصنع حديد البحر الاحمر للصناعة
ص. ب. ٥٤١١٨ ، جدة ٢١٥١٤ ،
المملكة العربية السعودية
تلفون : ٢١٩ ٤٢٦٥ ١٢ ٩٦٦
فكس : ٢٨١٦ ١٢ ٩٦٦

REINFORCING BARS SPECIFICATIONS

Mechanical Properties

Standard	Grade	Nominal Diameter mm	Yield Strength MPa (min)	Tensile Strength MPa (min.)	Tensile to Yield Ratio (min.)	Elongation in 200mm % (min.)
SASO ASTM A615M-21	Gr.80	16	620	730	1.18	12
		25	625	743	1.19	14.0
		32	614	736	1.20	14.5
		36	625	752	1.20	16.0
	Gr.60	10	561	674	1.20	13.0
		12	543	657	1.21	13.0
		14	572	685	1.20	15.5
		16	497	639	1.29	15.5
		25	425	588	1.38	24.5
		32	542	680	1.25	17.0
		36	616	752	1.22	14.5

*Saudi standards adopted from SASO ASTM (A615M-21)

RED SEA STEEL COMPANY LTD.
P. O. Box 54118, Jeddah 21514
Saudi Arabia
Tel. : +966 12 665 4219
Fax: +966 12 667 2816



حديد البحر الاحمر
RED SEA STEEL

شركة مصنع حديد البحر الاحمر للصناعة
ص. ب. ٥٤١١٨ ، جدة ٢١٥١٤ ،
المملكة العربية السعودية
تلفون : ٤٢١٩ ١٢ ٦٦٥ +٩٦٦
فكس : ٢٨١٦ ١٢ ٦٦٧ +٩٦٦

REINFORCING BARS SPECIFICATIONS

Chemical Composition

Standard	Grade	Nominal Diameter mm	Carbon % (C)	Silicon % (Si)	Manganese % (Mn)	Sulfur % (S)	Phosphorus % (P)
SASO ASTM A706-16	Gr.80	16	0.25	0.24	0.71	0.015	0.010
		25	0.25	0.23	0.70	0.013	0.010
		32	0.24	0.23	0.65	0.013	0.017
		36	0.24	0.22	0.64	0.030	0.020
	Gr.60	10	0.24	0.20	0.70	0.025	0.003
		12	0.25	0.19	0.72	0.031	0.006
		14	0.32	0.18	0.71	0.006	0.001
		16	0.25	0.25	0.68	0.020	0.024
		25	0.25	0.20	0.68	0.017	0.009
		32	0.24	0.21	0.65	0.032	0.023
		36	0.24	0.22	0.64	0.030	0.020

NOTE:

1. Product analysis may differ. Standard tolerances will apply.
2. Other elements like, Ni, Cr, Mo, V, Nb, Ti ... etc. may be added if required.

RED SEA STEEL COMPANY LTD.
P. O. Box 54118, Jeddah 21514
Saudi Arabia
Tel. : +966 12 665 4219
Fax: +966 12 667 2816



حديد البحر الاحمر
RED SEA STEEL

شركة مصنع حديد البحر الاحمر للصناعة
ص. ب. ٥٤١١٨ ، جدة ٢١٥١٤ ،
المملكة العربية السعودية
تلفون : ٤٢١٩ ١٢ ٦٦٥ +٩٦٦
فكس : ٢٨١٦ ١٢ ٦٦٧ +٩٦٦

REINFORCING BARS SPECIFICATIONS

Linear Mass and Number of Bars in Bundles

Diameter (mm)	Linear mass Kg/Meter	Tolerance in linear mass (maximum) ASTM A615	Number of 12 m long bars In a bundle of nominal weight of 2 tons.
10	0.617	- 6 %	270
12	0.888	- 6 %	188
14	1.208	- 6 %	138
16	1.578	- 6 %	106
25	3.853	- 6 %	44
32	6.313	- 6 %	26
36	7.990	- 6 %	21

Other specifications are possible. Please contact Sales & Marketing for details

RED SEA STEEL COMPANY LTD.
P. O. Box 54118, Jeddah 21514
Saudi Arabia
Tel. : +966 12 665 4219
Fax: +966 12 667 2816



حديد البحر الاحمر
RED SEA STEEL

شركة مصنع حديد البحر الاحمر للصناعة
ص. ب. ٥٤١١٨ ، جدة ٢١٥١٤ ،
المملكة العربية السعودية
تلفون : ٤٢١٩ ٤٦٦٥ ١٢ ٩٦٦
فكس : ٢٨١٦ ٦٦٧ ١٢ ٩٦٦

REINFORCING BARS SPECIFICATIONS

Diameter 16mm (Gr.80)



6287038030115

Mechanical Properties

Standard	Grade	Nominal Diameter mm	Yield Strength 550MPa (min)	Tensile Strength 690MPa (min.)	Tensile to Yield Ratio 1.10 (min.)	Elongation in 200mm 7% (min.)
SASO ASTM A615M-21	Gr.80	16	620	730	1.18	12

*Saudi standards adopted from SASO ASTM (A615M-21)

Chemical Composition

Standard	Grade	Carbon % (C)	Silicon % (Si)	Manganese % (Mn)	Sulfur % (S)	Phosphorus % (P)
SASO ASTM A706-16	Gr.80	0.25	0.24	0.71	0.015	0.010

NOTE:

1. Product analysis may differ. Standard tolerances will apply.
2. Other elements like, Ni, Cr, Mo, V, Nb, Ti ... etc. may be added if required.

Linear Mass and Number of Bars in Bundles

Diameter (mm)	Linear mass Kg/Meter	Tolerance in linear mass (maximum) ASTM A615	Number of 12 m long bars In a bundle of nominal weight of 2 tons.
16	1.578	- 6 %	106

Other specifications are possible. Please contact Sales & Marketing for details.

This document is owned by RED SEA STEEL COMPANY LTD and may not be reproduced without the company's prior written approval.



RED SEA STEEL COMPANY LTD.
P. O. Box 54118, Jeddah 21514
Saudi Arabia
Tel. : +966 12 665 4219
Fax: +966 12 667 2816



حديد البحر الاحمر
RED SEA STEEL

شركة مصنع حديد البحر الاحمر للصناعة
ص. ب. ٥٤١١٨ ، جدة ٢١٥١٤ ،
المملكة العربية السعودية
تلفون : ٤٢١٩ ١٢ ٦٦٥ +٩٦٦
فكس : ٢٨١٦ ١٢ ٦٦٧ +٩٦٦

REINFORCING BARS SPECIFICATIONS

Diameter 25mm (Gr.80)



6287038030085

Mechanical Properties

Standard	Grade	Nominal Diameter mm	Yield Strength 550MPa (min)	Tensile Strength 690MPa (min.)	Tensile to Yield Ratio 1.10 (min.)	Elongation in 200mm 7% (min.)
SASO ASTM A615M-21	Gr.80	25	625	743	1.19	14.0

*Saudi standards adopted from SASO ASTM (A615M-21)

Chemical Composition

Standard	Grade	Carbon % (C)	Silicon % (Si)	Manganese % (Mn)	Sulfur % (S)	Phosphorus % (P)
SASO ASTM A706-16	Gr.80	0.25	0.23	0.70	0.013	0.010

NOTE:

1. Product analysis may differ. Standard tolerances will apply.
2. Other elements like, Ni, Cr, Mo, V, Nb, Ti ... etc. may be added if required.

Linear Mass and Number of Bars in Bundles

Diameter (mm)	Linear mass Kg/Meter	Tolerance in linear mass (maximum) ASTM A615	Number of 12 m long bars In a bundle of nominal weight of 2 tons.
25	3.853	- 6 %	44

Other specifications are possible. Please contact Sales & Marketing for details.

RED SEA STEEL COMPANY LTD.
P. O. Box 54118, Jeddah 21514
Saudi Arabia
Tel. : +966 12 665 4219
Fax: +966 12 667 2816



حديد البحر الاحمر
RED SEA STEEL

شركة مصنع حديد البحر الاحمر للصناعة
ص. ب. ٥٤١١٨ ، جدة ، ٢١٥١٤ ،
المملكة العربية السعودية
تلفون : ٤٢١٩ ١٢ ٦٦٥ +٩٦٦
فكس : ٢٨١٦ ١٢ ٦٦٧ +٩٦٦

REINFORCING BARS SPECIFICATIONS

Diameter 32mm (Gr.80)



6287038030092

Mechanical Properties

Standard	Grade	Nominal Diameter mm	Yield Strength 550MPa (min)	Tensile Strength 690MPa (min.)	Tensile to Yield Ratio 1.10 (min.)	Elongation in 200mm 6% (min.)
SASO ASTM A615M-21	Gr.80	32	614	736	1.20	14.5

*Saudi standards adopted from SASO ASTM (A615M-21)

Chemical Composition

Standard	Grade	Carbon % (C)	Silicon % (Si)	Manganese % (Mn)	Sulfur % (S)	Phosphorus % (P)
SASO ASTM A706-16	Gr.80	0.24	0.23	0.65	0.013	0.017

NOTE:

1. Product analysis may differ. Standard tolerances will apply.
2. Other elements like, Ni, Cr, Mo, V, Nb, Ti ... etc. may be added if required.

Linear Mass and Number of Bars in Bundles

Diameter (mm)	Linear mass Kg/Meter	Tolerance in linear mass (maximum) ASTM A615	Number of 12 m long bars In a bundle of nominal weight of 2 tons.
32	6.313	- 6 %	26

Other specifications are possible. Please contact Sales & Marketing for details.

RED SEA STEEL COMPANY LTD.
P. O. Box 54118, Jeddah 21514
Saudi Arabia
Tel. : +966 12 665 4219
Fax: +966 12 667 2816



حديد البحر الاحمر
RED SEA STEEL

شركة مصنع حديد البحر الاحمر للصناعة
ص. ب. ٥٤١١٨ ، جدة ٢١٥١٤ ،
المملكة العربية السعودية
تلفون : ٤٢١٩ ١٢ ٦٦٥ +٩٦٦
ففاكس : ٢٨١٦ ١٢ ٦٦٧ +٩٦٦

REINFORCING BARS SPECIFICATIONS

Diameter 36mm (Gr.80)



6387038030108

Mechanical Properties

Standard	Grade	Nominal Diameter mm	Yield Strength 550MPa (min)	Tensile Strength 690MPa (min.)	Tensile to Yield Ratio 1.10 (min.)	Elongation in 200mm 6% (min.)
SASO ASTM A615M-21	Gr.80	36	625	752	1.20	16.0

*Saudi standards adopted from SASO ASTM (A615M-21)

Chemical Composition

Standard	Grade	Carbon % (C)	Silicon % (Si)	Manganese % (Mn)	Sulfur % (S)	Phosphorus % (P)
SASO ASTM A706-16	Gr.80	0.24	0.22	0.64	0.030	0.020

NOTE:

1. Product analysis may differ. Standard tolerances will apply.
2. Other elements like, Ni, Cr, Mo, V, Nb, Ti ... etc. may be added if required.

Linear Mass and Number of Bars in Bundles

Diameter (mm)	Linear mass Kg/Meter	Tolerance in linear mass (maximum) ASTM A615	Number of 12 m long bars In a bundle of nominal weight of 2 tons.
36	7.990	- 6 %	21

Other specifications are possible. Please contact Sales & Marketing for details.

This document is owned by RED SEA STEEL COMPANY LTD and may not be reproduced without the company's prior written approval.



RED SEA STEEL COMPANY LTD.
P. O. Box 54118, Jeddah 21514
Saudi Arabia
Tel. : +966 12 665 4219
Fax: +966 12 667 2816



حديد البحر الاحمر
RED SEA STEEL

شركة مصنع حديد البحر الاحمر للصناعة
ص. ب. ٥٤١١٨ ، جدة ، ٢١٥١٤ ،
المملكة العربية السعودية
تلفون : ٤٢١٩ ٤٢٦٥ ١٢ ٩٦٦
فكس : ٢٨١٦ ٢٦٧ ١٢ ٩٦٦

REINFORCING BARS SPECIFICATIONS

Diameter 10mm (Gr.60)



6287038030016

Mechanical Properties

Standard	Grade	Nominal Diameter mm	Yield Strength 420MPa (min)	Tensile Strength 550MPa (min.)	Tensile to Yield Ratio 1.10 (min.)	Elongation in 200mm 9% (min.)
SASO ASTM A615M-21	Gr.60	10	561	674	1.20	13.0

*Saudi standards adopted from SASO ASTM (A615M-21)

Chemical Composition

Standard	Grade	Carbon % (C)	Silicon % (Si)	Manganese % (Mn)	Sulfur % (S)	Phosphorus % (P)
SASO ASTM A706-16	Gr.60	0.24	0.20	0.70	0.025	0.003

NOTE:

1. Product analysis may differ. Standard tolerances will apply.
2. Other elements like, Ni, Cr, Mo, V, Nb, Ti ... etc. may be added if required.

Linear Mass and Number of Bars in Bundles

Diameter (mm)	Linear mass Kg/Meter	Tolerance in linear mass (maximum) ASTM A615	Number of 12 m long bars In a bundle of nominal weight of 2 tons.
10	0.617	- 6 %	270

Other specifications are possible. Please contact Sales & Marketing for details.

This document is owned by RED SEA STEEL COMPANY LTD and may not be reproduced without the company's prior written approval.



RED SEA STEEL COMPANY LTD.
P. O. Box 54118, Jeddah 21514
Saudi Arabia
Tel. : +966 12 665 4219
Fax: +966 12 667 2816



حديد البحر الاحمر
RED SEA STEEL

شركة مصنع حديد البحر الاحمر للصناعة
ص. ب. ٥٤١١٨ ، جدة ٢١٥١٤ ،
المملكة العربية السعودية
تلفون : ٤٢١٩ ١٢ ٦٦٥ +٩٦٦
فكس : ٢٨١٦ ١٢ ٦٦٧ +٩٦٦

REINFORCING BARS SPECIFICATIONS

Diameter 12mm (Gr.60)



6287038030023

Mechanical Properties

Standard	Grade	Nominal Diameter mm	Yield Strength 420MPa (min)	Tensile Strength 550MPa (min.)	Tensile to Yield Ratio 1.10 (min.)	Elongation in 200mm 9% (min.)
SASO ASTM A615M-21	Gr.60	12	543	657	1.21	13.0

*Saudi standards adopted from SASO ASTM (A615M-21)

Chemical Composition

Standard	Grade	Carbon % (C)	Silicon % (Si)	Manganese % (Mn)	Sulfur % (S)	Phosphorus % (P)
SASO ASTM A706-16	Gr.60	0.25	0.19	0.72	0.031	0.006

NOTE:

1. Product analysis may differ. Standard tolerances will apply.
2. Other elements like, Ni, Cr, Mo, V, Nb, Ti ... etc. may be added if required.

Linear Mass and Number of Bars in Bundles

Diameter (mm)	Linear mass Kg/Meter	Tolerance in linear mass (maximum) ASTM A615	Number of 12 m long bars In a bundle of nominal weight of 2 tons.
12	0.888	- 6 %	188

Other specifications are possible. Please contact Sales & Marketing for details.

This document is owned by RED SEA STEEL COMPANY LTD and may not be reproduced without the company's prior written approval.



RED SEA STEEL COMPANY LTD.
P. O. Box 54118, Jeddah 21514
Saudi Arabia
Tel. : +966 12 665 4219
Fax: +966 12 667 2816



حديد البحر الاحمر
RED SEA STEEL

شركة مصنع حديد البحر الاحمر للصناعة
ص. ب. ٥٤١١٨ ، جدة ٢١٥١٤ ،
المملكة العربية السعودية
تلفون : ٤٢١٩ ١٢ ٦٦٥ +٩٦٦
ففاكس : ٢٨١٦ ١٢ ٦٦٧ +٩٦٦

REINFORCING BARS SPECIFICATIONS

Diameter 14mm (Gr.60)



6287038030030

Mechanical Properties

Standard	Grade	Nominal Diameter mm	Yield Strength 420MPa (min)	Tensile Strength 550MPa (min.)	Tensile to Yield Ratio 1.10 (min.)	Elongation in 200mm 9% (min.)
SASO ASTM A615M-21	Gr.60	14	572	685	1.20	15.5

*Saudi standards adopted from SASO ASTM (A615M-21)

Chemical Composition

Standard	Grade	Carbon % (C)	Silicon % (Si)	Manganese % (Mn)	Sulfur % (S)	Phosphorus % (P)
SASO ASTM A706-16	Gr.60	0.32	0.18	0.71	0.006	0.001

NOTE:

1. Product analysis may differ. Standard tolerances will apply.
2. Other elements like, Ni, Cr, Mo, V, Nb, Ti ... etc. may be added if required.

Linear Mass and Number of Bars in Bundles

Diameter (mm)	Linear mass Kg/Meter	Tolerance in linear mass (maximum) ASTM A615	Number of 12 m long bars In a bundle of nominal weight of 2 tons.
14	1.208	- 6 %	138

Other specifications are possible. Please contact Sales & Marketing for details.

This document is owned by RED SEA STEEL COMPANY LTD and may not be reproduced without the company's prior written approval.



RED SEA STEEL COMPANY LTD.
P. O. Box 54118, Jeddah 21514
Saudi Arabia
Tel. : +966 12 665 4219
Fax: +966 12 667 2816



حديد البحر الاحمر
RED SEA STEEL

شركة مصنع حديد البحر الاحمر للصناعة
ص. ب. ٥٤١١٨ ، جدة ، ٢١٥١٤ ،
المملكة العربية السعودية
تلفون : ٤٢١٩ ١٢ ٦٦٥ +٩٦٦
ففاكس : ٢٨١٦ ١٢ ٦٦٧ +٩٦٦

REINFORCING BARS SPECIFICATIONS

Diameter 16mm (Gr.60)



6287038030047

Mechanical Properties

Standard	Grade	Nominal Diameter mm	Yield Strength 420MPa (min)	Tensile Strength 550MPa (min.)	Tensile to Yield Ratio 1.10 (min.)	Elongation in 200mm 9% (min.)
SASO ASTM A615M-21	Gr.60	16	497	639	1.29	15.5

*Saudi standards adopted from SASO ASTM (A615M-21)

Chemical Composition

Standard	Grade	Carbon % (C)	Silicon % (Si)	Manganese % (Mn)	Sulfur % (S)	Phosphorus % (P)
SASO ASTM A706-16	Gr.60	0.25	0.25	0.68	0.020	0.024

NOTE:

1. Product analysis may differ. Standard tolerances will apply.
2. Other elements like, Ni, Cr, Mo, V, Nb, Ti ... etc. may be added if required.

Linear Mass and Number of Bars in Bundles

Diameter (mm)	Linear mass Kg/Meter	Tolerance in linear mass (maximum) ASTM A615	Number of 12 m long bars In a bundle of nominal weight of 2 tons.
16	1.578	- 6 %	106

Other specifications are possible. Please contact Sales & Marketing for details.

This document is owned by RED SEA STEEL COMPANY LTD and may not be reproduced without the company's prior written approval.



RED SEA STEEL COMPANY LTD.
P. O. Box 54118, Jeddah 21514
Saudi Arabia
Tel. : +966 12 665 4219
Fax: +966 12 667 2816



حديد البحر الاحمر
RED SEA STEEL

شركة مصنع حديد البحر الاحمر للصناعة
ص. ب. ٥٤١١٨ ، جدة ، ٢١٥١٤ ،
المملكة العربية السعودية
تلفون : ٤٢١٩ ١٢ ٦٦٥ +٩٦٦
ففاكس : ٢٨١٦ ١٢ ٦٦٧ +٩٦٦

REINFORCING BARS SPECIFICATIONS

Diameter 25mm (Gr.60)



6287038030054

Mechanical Properties

Standard	Grade	Nominal Diameter mm	Yield Strength 420MPa (min)	Tensile Strength 550MPa (min.)	Tensile to Yield Ratio 1.10 (min.)	Elongation in 200mm 8% (min.)
SASO ASTM A615M-21	Gr.60	25	425	588	1.38	24.5

*Saudi standards adopted from SASO ASTM (A615M-21)

Chemical Composition

Standard	Grade	Carbon % (C)	Silicon % (Si)	Manganese % (Mn)	Sulfur % (S)	Phosphorus % (P)
SASO ASTM A706-16	Gr.60	0.25	0.20	0.68	0.017	0.009

NOTE:

1. Product analysis may differ. Standard tolerances will apply.
2. Other elements like, Ni, Cr, Mo, V, Nb, Ti ... etc. may be added if required.

Linear Mass and Number of Bars in Bundles

Diameter (mm)	Linear mass Kg/Meter	Tolerance in linear mass (maximum) ASTM A615	Number of 12 m long bars In a bundle of nominal weight of 2 tons.
25	3.853	- 6 %	44

Other specifications are possible. Please contact Sales & Marketing for details.

This document is owned by RED SEA STEEL COMPANY LTD and may not be reproduced without the company's prior written approval.



RED SEA STEEL COMPANY LTD.
P. O. Box 54118, Jeddah 21514
Saudi Arabia
Tel. : +966 12 665 4219
Fax: +966 12 667 2816



حديد البحر الاحمر
RED SEA STEEL

شركة مصنع حديد البحر الاحمر للصناعة
ص. ب. ٥٤١١٨ ، جدة ، ٢١٥١٤ ،
المملكة العربية السعودية
تلفون : ٤٢١٩ ١٢ ٦٦٥ +٩٦٦
ففاكس : ٢٨١٦ ١٢ ٦٦٧ +٩٦٦

REINFORCING BARS SPECIFICATIONS

Diameter 32mm (Gr.60)



6287038030061

Mechanical Properties

Standard	Grade	Nominal Diameter mm	Yield Strength 420MPa (min)	Tensile Strength 550MPa (min.)	Tensile to Yield Ratio 1.10 (min.)	Elongation in 200mm 7% (min.)
SASO ASTM A615M-21	Gr.60	32	542	680	1.25	17.0

*Saudi standards adopted from SASO ASTM (A615M-21)

Chemical Composition

Standard	Grade	Carbon % (C)	Silicon % (Si)	Manganese % (Mn)	Sulfur % (S)	Phosphorus % (P)
SASO ASTM A706-16	Gr.60	0.24	0.21	0.65	0.032	0.023

NOTE:

1. Product analysis may differ. Standard tolerances will apply.
2. Other elements like, Ni, Cr, Mo, V, Nb, Ti ... etc. may be added if required.

Linear Mass and Number of Bars in Bundles

Diameter (mm)	Linear mass Kg/Meter	Tolerance in linear mass (maximum) ASTM A615	Number of 12 m long bars In a bundle of nominal weight of 2 tons.
32	6.313	- 6 %	26

Other specifications are possible. Please contact Sales & Marketing for details.

This document is owned by RED SEA STEEL COMPANY LTD and may not be reproduced without the company's prior written approval.



RED SEA STEEL COMPANY LTD.
P. O. Box 54118, Jeddah 21514
Saudi Arabia
Tel. : +966 12 665 4219
Fax: +966 12 667 2816



حديد البحر الاحمر
RED SEA STEEL

شركة مصنع حديد البحر الاحمر للصناعة
ص. ب. ٥٤١١٨ ، جدة ٢١٥١٤ ،
المملكة العربية السعودية
تلفون : ٤٢١٩ ١٢ ٦٦٥ +٩٦٦
فكس : ٢٨١٦ ١٢ ٦٦٧ +٩٦٦

REINFORCING BARS SPECIFICATIONS

Diameter 36mm (Gr.60)



6287038030078

Mechanical Properties

Standard	Grade	Nominal Diameter mm	Yield Strength 420MPa (min)	Tensile Strength 550MPa (min.)	Tensile to Yield Ratio 1.10 (min.)	Elongation in 200mm 7% (min.)
SASO ASTM A615M-21	Gr.60	36	616	752	1.22	14.5

*Saudi standards adopted from SASO ASTM (A615M-21)

Chemical Composition

Standard	Grade	Carbon % (C)	Silicon % (Si)	Manganese % (Mn)	Sulfur % (S)	Phosphorus % (P)
SASO ASTM A706-16	Gr.60	0.24	0.22	0.64	0.030	0.020

NOTE:

1. Product analysis may differ. Standard tolerances will apply.
2. Other elements like, Ni, Cr, Mo, V, Nb, Ti ... etc. may be added if required.

Linear Mass and Number of Bars in Bundles

Diameter (mm)	Linear mass Kg/Meter	Tolerance in linear mass (maximum) ASTM A615	Number of 12 m long bars In a bundle of nominal weight of 2 tons.
36	7.990	- 6 %	21

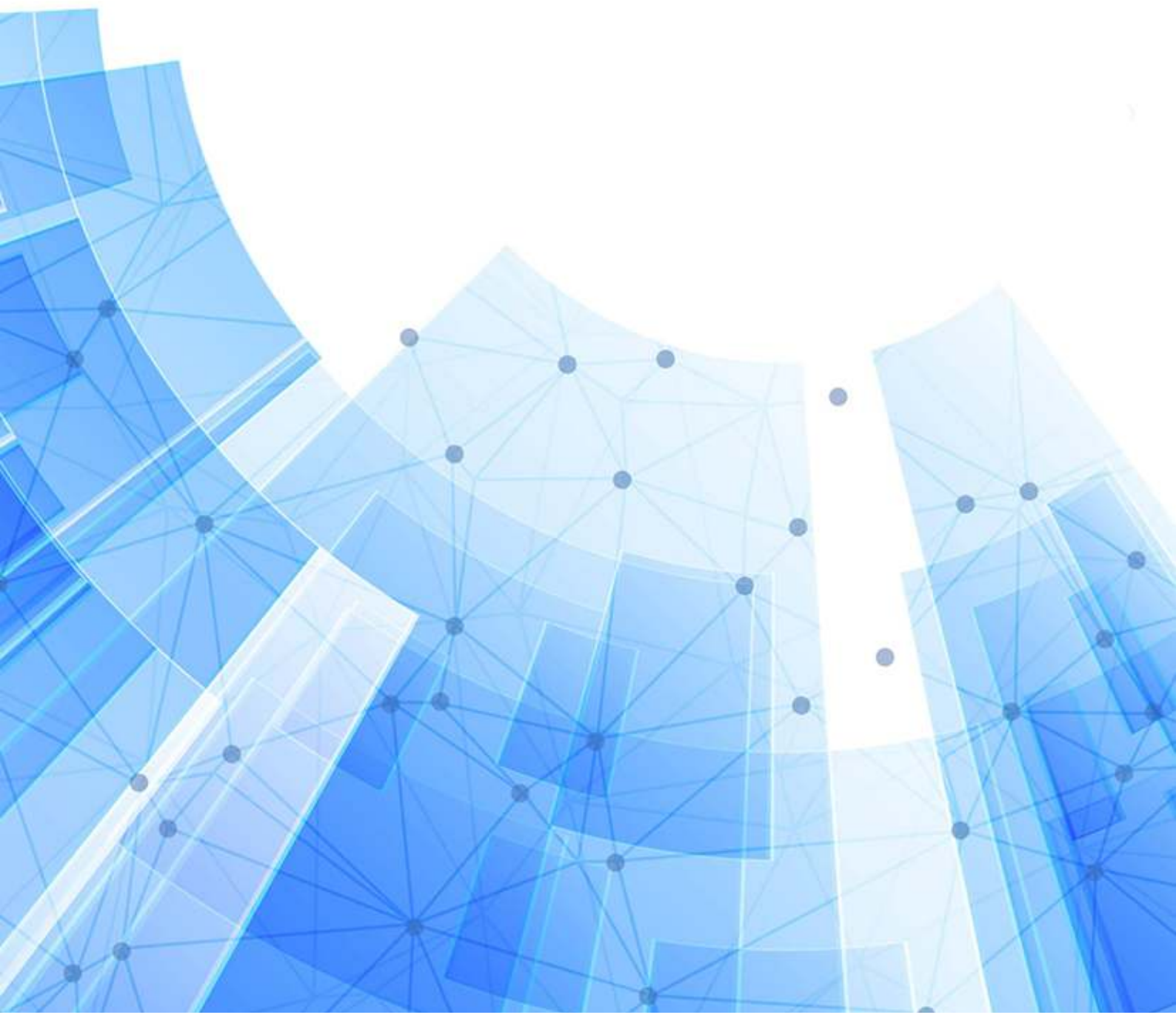
Other specifications are possible. Please contact Sales & Marketing for details.

This document is owned by RED SEA STEEL COMPANY LTD and may not be reproduced without the company's prior written approval.





PRODUCT CERTIFICATION - SASO





شهادة ترخيص باستخدام علامة الجودة License For Use of The Quality Mark

License Number: 20230449441 رقم الترخيص:

SASO certifies that it has granted the right to use (SASO) quality mark on the following products, after fulfilling the required requirements according to the related normative references:

تشهد الهيئة السعودية للمواصفات والمقاييس والجودة بأنها رخصت باستخدام علامة الجودة على المنتجات الموضحة أدناه بعد استيفائها للمتطلبات اللازمة وفق المراجع القياسية الخاصة بها:

The Establishment:	شركة مصنع حديد البحر الأحمر للصناعة	المنشأة:
The Establishment's Address:	7571 طريق المدينة المنورة ، حي الشرفية، مركز الخليج بلازا ، جدة 23218 - 2163	عنوان المنشأة:
Production Line Location:	رابع	موقع خط الإنتاج:
Normative References:	SASO ASTM A615/A615M:2021 اللائحة الفنية لمواد البناء – الجزء الأول	المراجع القياسية:
The Trade Mark:	RED SEA STEEL	العلامة التجارية:
The Product:	اسياخ الصلب الكربوني	المنتج: (تفاصيل المنتج في الملحق)
Date of Granting:	26/02/2023	تاريخ المنح:
Date of Renwal:	-	تاريخ التجديد:
Date of Expiry:	26/02/2026	تاريخ الانتهاء:



نائب المحافظ للمطابقة والعمليات
Vice-Governor, Operations and Conformity

المهندس / سعود بن راشد العسكر
Eng. Saud R. AlAskar



للتأكد من صحة هذه الشهادة يرجى زيارة موقعنا على الإنترنت، وأي كسب أو تغيير في هذه الشهادة يلغيها.
To verify this certification visit SASO website, and any changes or modification on this certificate will affect its validity.



ملحق شهادة ترخيص باستخدام علامة الجودة
Appendix (License For Use of The Quality Mark)

The establishment:	شركة مصنع حديد البحر الأحمر للصناعة
Certificate No.:	20230449441
Certificate Expiration Date:	26/02/2026
Product:	اسياخ الصلب الكربوني
Brand Name:	RED SEA STEEL

المنشأة:	
رقم الترخيص:	
تاريخ انتهاء الترخيص:	
المنتج:	
العلامة التجارية:	

التاريخ/المنح/التجديد Date of Granting/Renewal	المقاسات Size	الصف Classification	م No.
26/02/2023	(10 , 12 , 14 , 16 , 25, 32, 36) mm	اسياخ الصلب الكربوني ذات النتوءات لتسليح الخرسانة من الدرجة ٦٠ (Grade 60)	1
26/02/2023	(16 , 25, 32, 36) mm	اسياخ الصلب الكربوني ذات النتوءات لتسليح الخرسانة من الدرجة ٨٠ (Grade 80)	2



مصنع

